



Situational Analysis of Soybean



**Commodity Outlook Situational Analysis (Centre for M & E)
National Institute of Agricultural Extension Management (Hyderabad)**

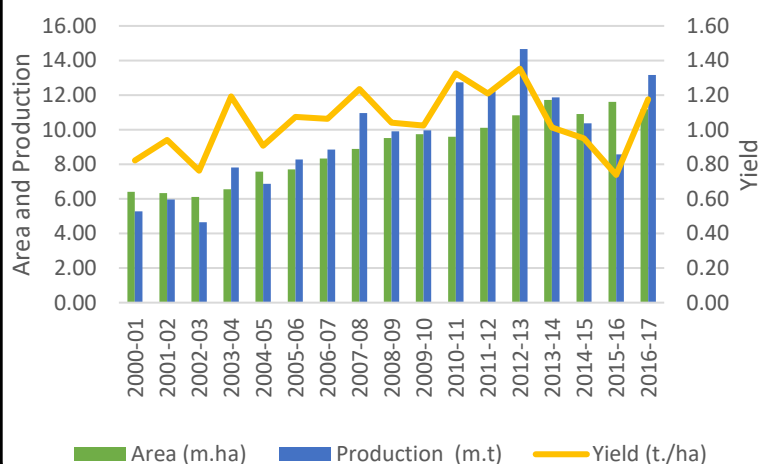
Major producing states of soybean in India

1. Madhya Pradesh
2. Maharashtra
3. Rajasthan
4. Karnataka
5. Gujarat

Area, production and yield of Soybean in major cultivating states in India (TE-2016-17)

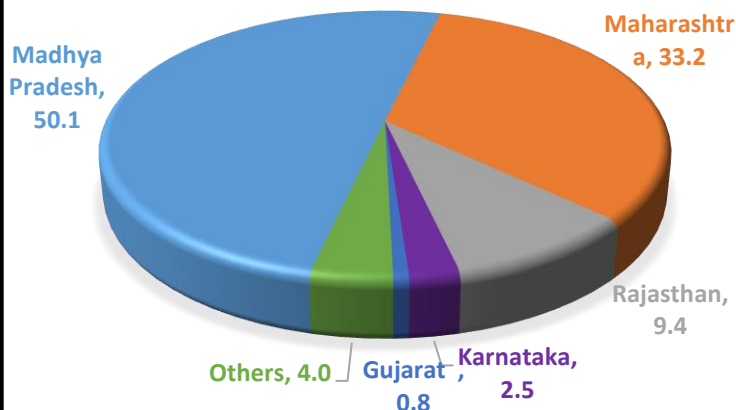
States	Area (m.ha)	Production (m.t)	Yield (t./ha)	Share in total area (%)	Share in total production (%)	Growth from 2000-01 to 2016-17		
						Area	Production	Yield
Madhya Pradesh	5.63	5.97	1.07	50.11	55.79	2.36	4.35	1.98
Maharashtra	3.73	3.01	0.80	33.18	28.13	7.66	6.02	-1.65
Rajasthan	1.06	1.03	0.98	9.45	9.62	4.74	5.82	1.08
Karnataka	0.28	0.19	0.68	2.47	1.76	9.77	10.52	0.75
Gujarat	0.09	0.06	0.72	0.76	0.57	14.89	15.48	0.59
All India	11.23	10.70	0.96	100.00	100.00	4.33	5.29	0.95

A,P and Y of Soybean in India from 2000-01 to 2016-17



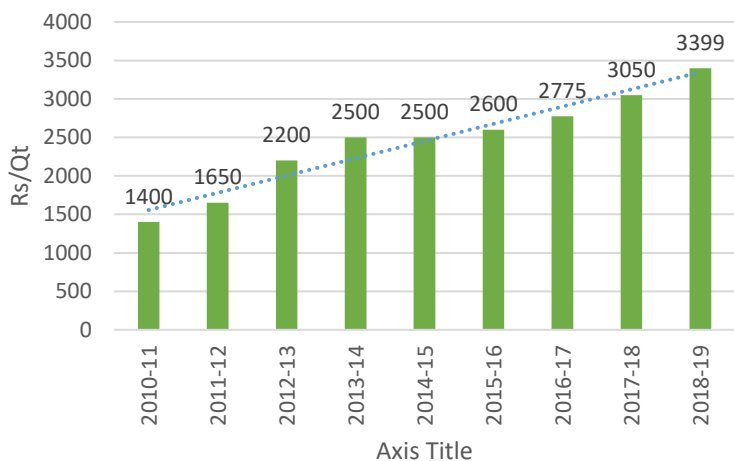
- In India, area under soybean cultivation is around 11.23 million ha with a production of 10.70 million MT and productivity of 0.96 MT/ha.
- Production of soybean showed an increasing trend with certain degree of fluctuation during 2000-01 to 2012-13, thereafter production continuously declined till 2015-16, however again increase in 2016-17.
- Yield levels of soybean indicated fluctuation during 2000-01 to 2012-12, but thereafter sharply declined and reached at lowest level in 2015-16.
- During 2000-01 to 2016-17, area under cultivation increased considerably, it was 6.42 million ha in 2000-01 and reached at 11.18 million ha in 2016-17.

Share of states in soybean production in TE 2016-17



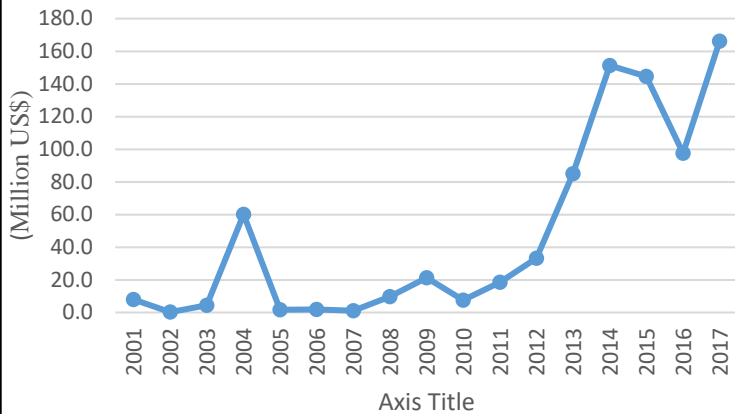
- Soybean is majorly produced in Madhya Pradesh (50.1 %), followed by Maharashtra (33.2%) Rajasthan (9.4%), Karnataka (2.5%), and Gujarat (0.8%).
- Madhya Pradesh and Maharashtra together contributed more than 80 percent of soybean production in India.
- In the last two decades, Madhya Pradesh, Maharashtra and Rajasthan recorded considerable area and production growth of soybean.

Trends in MSP of soybean (Rs/Qt)



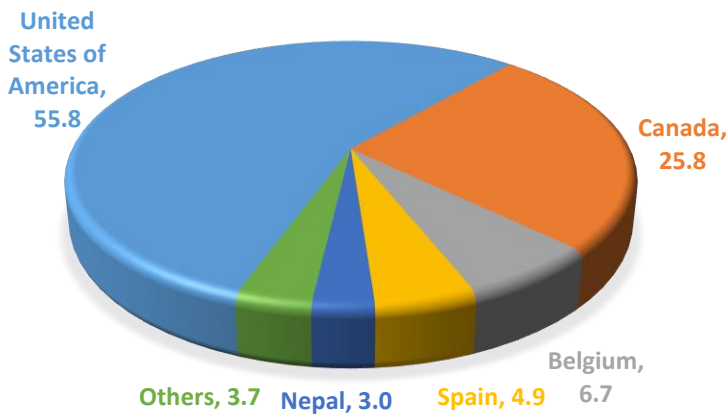
- MSP of soybean announced during 2018-19 was Rs. 3399 per quintal which is Rs. 349 more as compared to the MSP in 2017-18.
- There is an increasing trend in the MSP of soybean announced by the Govt. of India during 2010-11 to 2018-19.
- Between 2010-11 and 2018-19, MSP of soybean increased by Rs.1999.

Year-wise India's soybean Export from 2001 to 2017
(Million US\$)



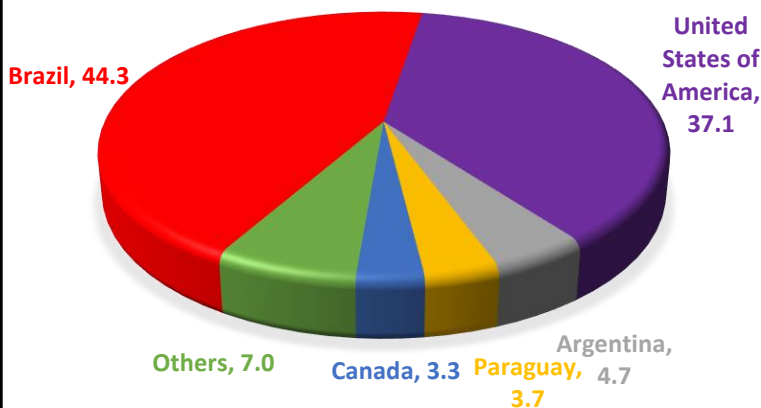
- India export soybean about 40 countries of the world.
- Export of soybean was very low during 2001 to 2010, but from 2011 it started to increase till 2014. Further export of soybean declined in 2015 and 2016 before reaching at highest level in 2017.
- In 2001, value of soybean export was US\$ 7.9 million and reached to US\$ 166.1 million in 2017.

Major importing countries of soybean from india in 2017



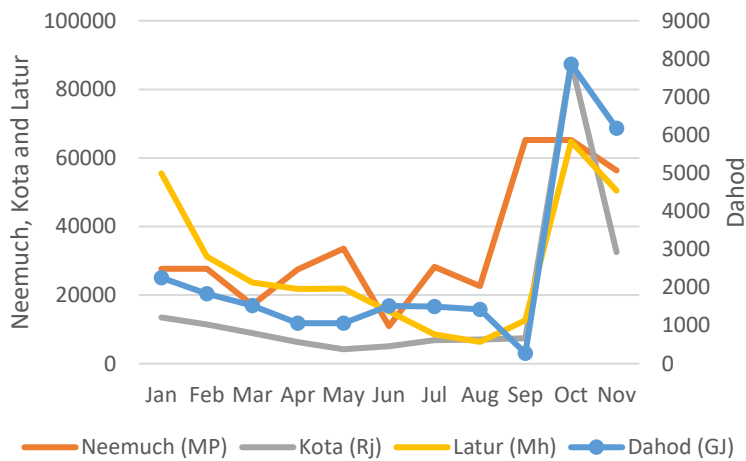
- India exports soybean to majorly United States of America (55.8%), followed by Canada (25.8 %), Belgium (6.7 %), Spain (4.9%) and Nepal (3%).
- Soybean export from India is highly concentrated in USA and Canada.
- China, Mexico, Netherlands and Japan are major importing countries of soybean in the world but none of them are importing from India.
- These countries could be the potential market for India's soybean export.

World's major exporters of soybean export in 2017



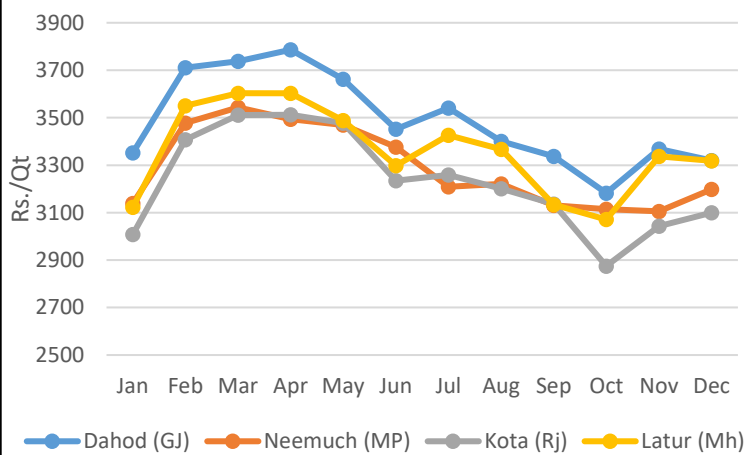
- Brazil ranks first in the world by constituting 44.3 percent share in global soybean exports (2017). The other leading countries are USA (37.1%), Argentina (4.7%), Paraguay (3.7%) and Canada (3.3%).
- China and India are among the top five producers of soybean but they are not in top exporting countries in the world due to high domestic demand.

Month wise Arrival (in Qt.) of Soybean in Major Markets in 2018



- In Neemuch, Kota and Dahod markets, low trends in arrivals were recorded from January and September, however in Neemuch market, some fluctuation was registered in arrival during this period, thereafter arrivals was increase sharply and reached at highest level in October but again declined in November.
- In Latur markets, arrivals were high in January, but it declined continuously till August. In September and October arrivals increase but again declined in November.
- In Dahod market arrivals were less than other three markets.
- Peak arrivals were was seen in October month in all markets.

Month wise Price (Per Qt.) of Soybean in Major Markets in 2018



- In all four markets (Dahod, Neemuch, Kota and Latur), prices of soybean showed same trends.
- Prices of soybean were low in January but increase in February and remained relatively stable during February to April. Thereafter price of soybean started to declined till October and further increase in November and December.
- Trends shows that March and April are the best month to sell soybean in the markets.
- Prices of soybean remained between Rs.3100 per quintal to Rs.3500 per quintal in most of the month of the year.

Data Sources

<https://eands.dacnet.nic.in/>

<http://agmarknet.gov.in/>

<http://www.intracen.org/itc/market-info-tools/trade-statistics/>